

caracole



JUST DUET

uph-420-131-a

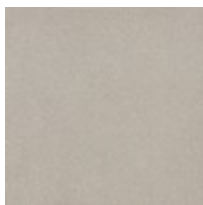
COLLECTION: CARACOLE UPHOLSTERY

DIMENSIONS: 32.25W x 39D x 28.5H

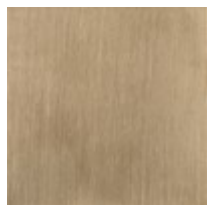
On a balcony railing of a former palace converted to a hotel in India is a carved pattern that was the muse for the pierced design found on this chair's outer arms. The idea of layering metal fretwork behind the wood was inspired by the dual shadow cast on the balcony by the setting sun through the railing's design. Creating a high-fashion look unique to itself, these elements are highlighted with illuminating shades of Soft Silver Paint and Champagne Gold and an exquisite cover.

CONSTRUCTION: 8-way hand tied seat. | Springdown cushion.

FINISH:



Soft Silver Paint

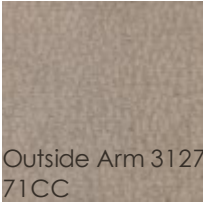


Champagne Gold

FABRIC:



Body Fabric: 2785-35CC



Outside Arm 3127-71CC